



CRD Evacuation Alert

Horse Lake - Sheridan Lake Area Expansion

Thursday, July 15, 2021 at 7:00 pm

Pursuant to the BC Emergency Program Act, the order in a portion of the Flat Lake to Green Lake N area is being **rescinded and replaced** by the following Alert Area by the Cariboo Regional District at the Emergency Operations Centre (EOC).

See attached map

In an alert area, you must remain prepared to evacuate your premises or property should it be required. Due to ongoing fire control activities, access to some areas may be limited and is at the discretion of check point personnel.

Residents will be given as much advance notice as possible prior to evacuation; however, you may receive limited notice due to changing conditions.

WHAT YOU SHOULD DO WHEN AN ALERT IS IN EFFECT

Upon notification of an **ALERT**, you should be prepared for the evacuation order:

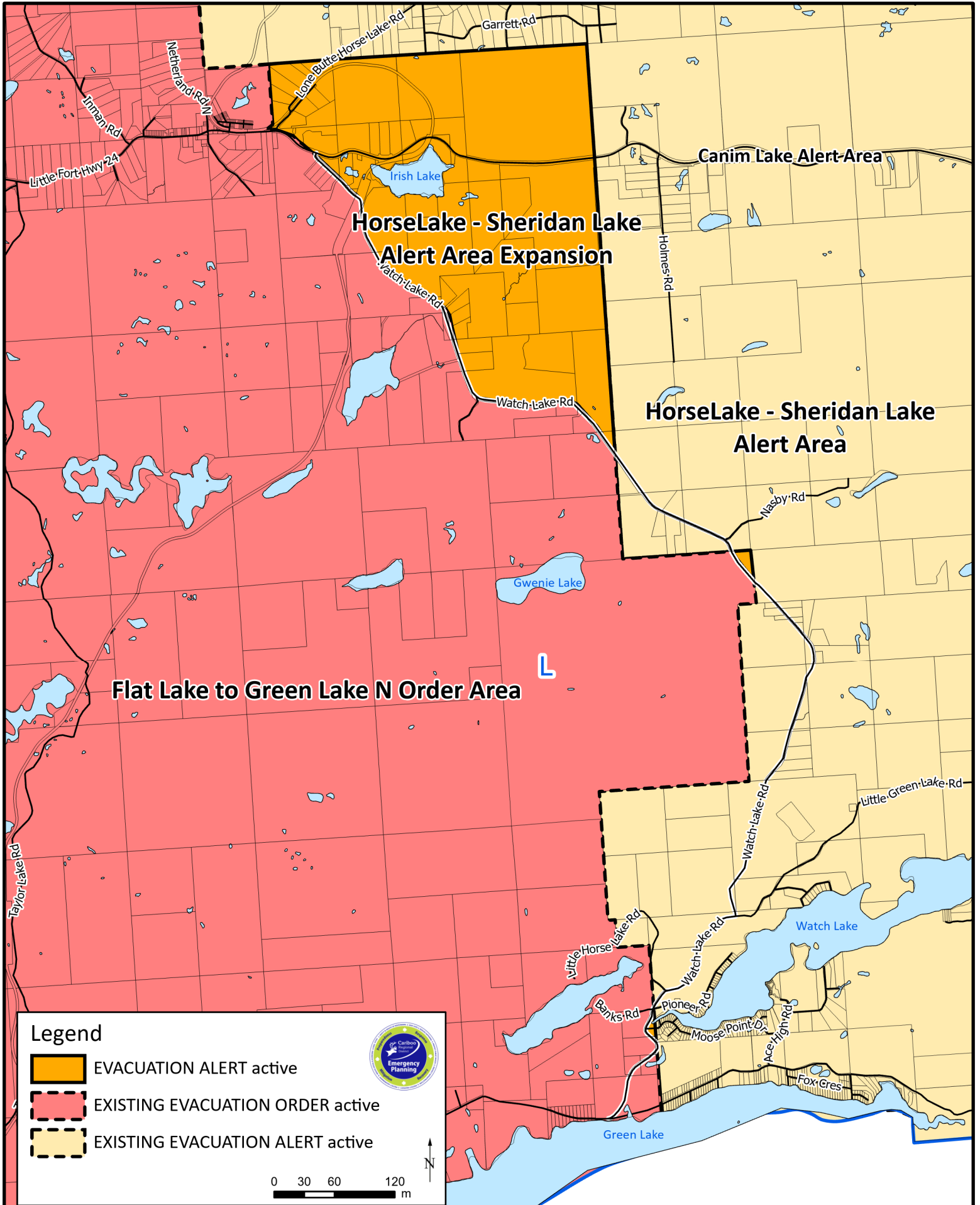
- Having a plan to transport all family members or co-workers outside of the area, should the area be brought under evacuation order.
- Keeping essential items readily available for a quick departure; including medications, eyeglasses, valuable papers (i.e. insurance), immediate care needs for dependents and, if you choose, keepsakes (photographs, etc).
- Ensuring that any dependents are prepared for departure.
- Prepare to move people with disabilities, children and/or neighbours, if assistance is needed.
- Moving pets and livestock to a safe area.
- Ensuring that you have accommodation options for your family, if possible. A Reception Centre will be made available if required.
- In the event you are evacuated, **do not** shut off your natural gas. For more information, visit fortisbc.com/forestfires.
- Monitoring reliable news sources for information on evacuation orders and locations of Reception Centres and the CRD's channels on Facebook and cariboord.ca/emergency.
- If you are on an evacuation ALERT, or if you have been displaced from your home due to an emergency, please self-register for Emergency Support Services. Self-Registration will reduce wait times for evacuees and assist in the referral process. <https://ess.gov.bc.ca/>

For more information contact: 1-866-759-4977

x **Margo A. Wagner**

Margo Wagner, CRD Chair

HORSELAKE-SHERIDAN LAKE ALERT AREA EXPANSION, JULY 15, 2021 07:00 PM



Signature: 

Email: mwagner@cariboord.ca