



CRD Evacuation Alert - Forest Grove and 100 Mile Fringe North

An Evacuation Alert has been issued by Cariboo Regional District at the Emergency Operations Centre (EOC).

Because of the potential danger to life and health, the Cariboo Regional District has issued an Evacuation Alert for the following areas:

East of Highway 97 from 100 Mile House to Lac La Hache, East along Timothy Lake Road to the Southern boundary of School House Lake Provincial Park, East to and including the community of Eagle Creek, South to Hathaway Lake including Canim Lake and Drewery Lake, and West to 100 Mile House. Hathaway Lake is excluded from this alert.

An Evacuation Alert has been issued to prepare you to evacuate your premises or property should it be found necessary.

Residents will be given as much advance notice as possible prior to evacuation; however you may receive limited notice due to changing conditions.

Map attached

WHAT YOU SHOULD DO WHEN AN ALERT IS IN EFFECT

Upon notification of an **ALERT**, you should be prepared for the evacuation order by:

- Locating all family members or co-workers and designate a Reception Centre outside the evacuation area, should an evacuation be called while separated.
- Gathering essential items such as medications, eyeglasses, valuable papers (i.e. insurance), immediate care needs for dependants and, if you choose, keepsakes (photographs, etc). Have these items readily available for quick departure.
- Preparing to move any disabled persons and/or children.
- Moving pets and livestock to a safe area.
- Arranging to transport your household members or co-workers in the event of an evacuation order. If you need transportation assistance from the area please call 250-398-5117.
- Arranging accommodation for your family if possible. In the event of an evacuation, Reception Centres will be opened if required.
- Monitoring news sources for information on evacuation orders and locations of Reception Centres.

Further information will be issued as it becomes available. Please visit the CRD Emergency Operations Facebook page for periodic updates.

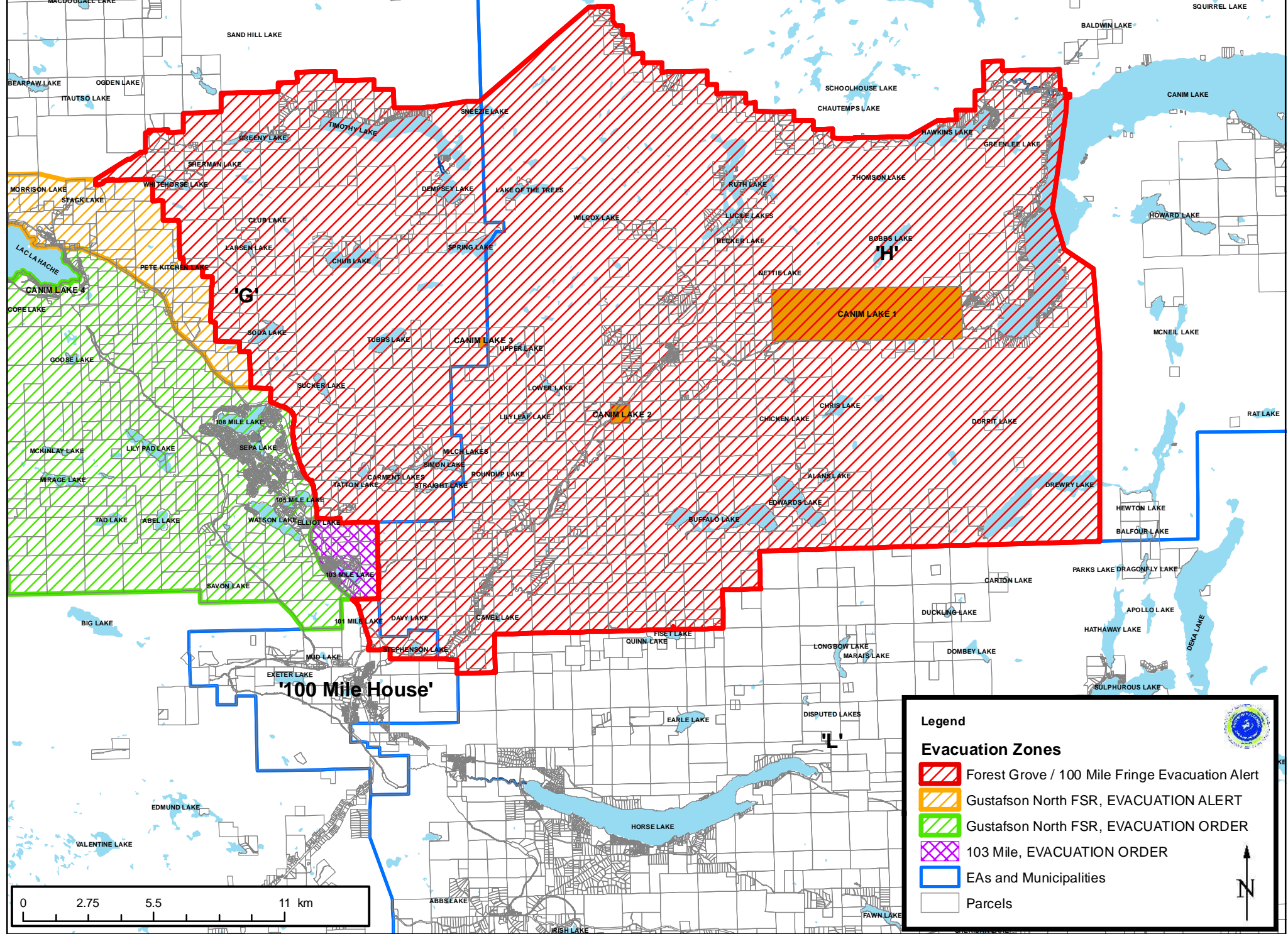
For more information contact: 250-398-5117

A handwritten signature in blue ink that reads 'Al Richmond'.

X _____







Al Richmond, CRD Chair

Forest Grove / 100 Mile Fringe North Evacuation Alert, July 9, 2017. 10:30 PM



Legend

Evacuation Zones

-  Forest Grove / 100 Mile Fringe Evacuation Alert
-  Gustafson North FSR, EVACUATION ALERT
-  Gustafson North FSR, EVACUATION ORDER
-  103 Mile, EVACUATION ORDER
-  EAs and Municipalities
-  Parcels

