



CRD Evacuation Alert

McLeese Lake to Kersley

July 15, 2017 – 6:45

An Evacuation Alert has been issued by Cariboo Regional District at the Emergency Operations Centre (EOC).

Because of the potential danger to life and health, the Cariboo Regional District has issued an Evacuation Alert for the following areas:

North and east of the existing “Fraser River to Polley Lake to Moffat Creek to 150 Mile” Evacuation Order area;
North to the Dragon Mountain Alert area.

If you choose to self evacuate, the evacuation route is north on Highway 97.

An Evacuation Alert has been issued to prepare you to evacuate your premises or property should it be required.

Residents will be given as much advance notice as possible prior to evacuation; however you may receive limited notice due to changing conditions.

WHAT YOU SHOULD DO WHEN AN ALERT IS IN EFFECT

Upon notification of an **ALERT**, you should be prepared for the evacuation order by:

- Locating all family members or co-workers and designate a Reception Centre outside the evacuation area, should an evacuation be called while separated.
- Gathering essential items such as medications, eyeglasses, valuable papers (i.e. insurance), immediate care needs for dependants and, if you choose, keepsakes (photographs, etc). Have these items readily available for quick departure.
- Preparing to move any disabled persons and/or children.
- Moving pets and livestock to a safe area.
- Arranging to transport your household members or co-workers in the event of an evacuation order. If you need transportation assistance from the area please call 1-866-759-4577.
- Arranging accommodation for your family if possible. In the event of an evacuation, Reception Centres will be opened if required.
- Monitoring news sources for information on evacuation orders and locations of Reception Centres.

Further information will be issued as it becomes available. Please visit the CRD Emergency Operations Facebook page as well as the CRD website at www.cariboord.ca.

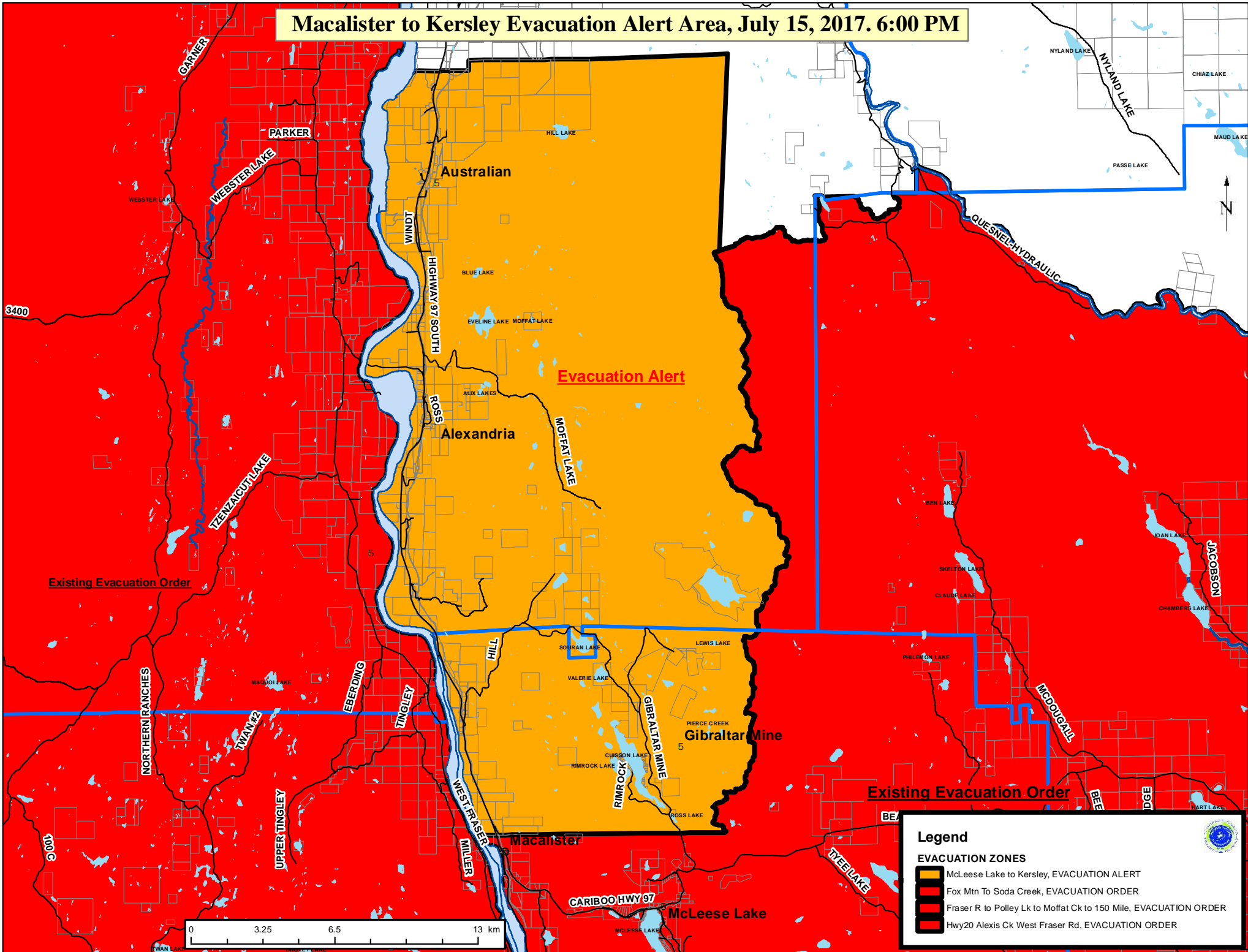
For more information contact: 1-866-759-4577

A handwritten signature in blue ink that reads 'Al Richmond'.

X

Al Richmond, CRD Chair

Macalister to Kersley Evacuation Alert Area, July 15, 2017. 6:00 PM



Legend

EVACUATION ZONES

- McLeese Lake to Kersley, EVACUATION ALERT
- Fox Mtn To Soda Creek, EVACUATION ORDER
- Fraser R to Polley Lk to Moffat Ck to 150 Mile, EVACUATION ORDER
- Hwy20 Alexis Ck West Fraser Rd, EVACUATION ORDER

