



CRD Evacuation Order and Alert

North End of Lac La Hache to 100 Mile House Boundary

Saturday, July 22, 2017 2:00 pm

Pursuant to the BC Emergency Program Act, an Evacuation Order and Alert has been issued by the Cariboo Regional District at the Emergency Operations Centre (EOC).

ORDER PARTIALLY DOWNGRADED TO ALERT – NORTH END OF LAC LA HACHE TO 100 MILE HOUSE BOUNDARY

This **alert** area is **replacing** the evacuation orders for the following:

100 Mile House Fire – Order 1 – July 6, 2017 at 6:05 pm
Gustafson North FSR Fire – Order 2, July 6, 2017 at 6:06 pm
Gustafson North FSR Fire – Order 3, July 6, 2017 at 11:42 pm
Gustafson North FSR Fire – Order – July 7, 2017 at 10:30 am
Gustafson North FSR Fire – Order – July 7, 2017 at 1:00 pm
103 Mile Fire – Order – July 7, 2017 at 4:45 pm

See attached map

As this Evacuation Alert replaces portions of a previous Evacuation Order you must remain prepared to evacuate your premises or property should it be required.

Residents will be given as much advance notice as possible prior to evacuation; however you may receive limited notice due to changing conditions.

What you should do when an evacuation order has been downgraded to an alert:

Upon notification of an evacuation order downgrade, you should remain prepared for an evacuation by:

- Ensuring that you know the location and preparing to transport all family members or co-workers and designate a Reception Centre outside the evacuation area, should the area brought back under evacuation order.
- Keeping essential items readily available for a quick departure, including medications, eyeglasses, valuable papers (i.e. insurance), immediate care needs for dependants and, if you choose, keepsakes (photographs, etc).
- Ensuring that any disabled persons and/or children are prepared for departure.
- Ensuring that pets and livestock remain in a safe area.

- Ensuring that you have accommodation options for your family, if possible. Reception Centre will be made available again if required.
- Monitoring reliable news sources for evacuation order information. Further information will be issued as it becomes available via the CRD Emergency Operations Facebook page (@CRDEmergencyOperations) and the CRD website www.cariboord.ca

EXPANDED ORDER – NORTHWEST OF 100 MILE HOUSE

Due to immediate danger to **life safety** due to fire, members of the RCMP or other groups expedited this action.

An expanded Evacuation Order is in effect for the following areas:

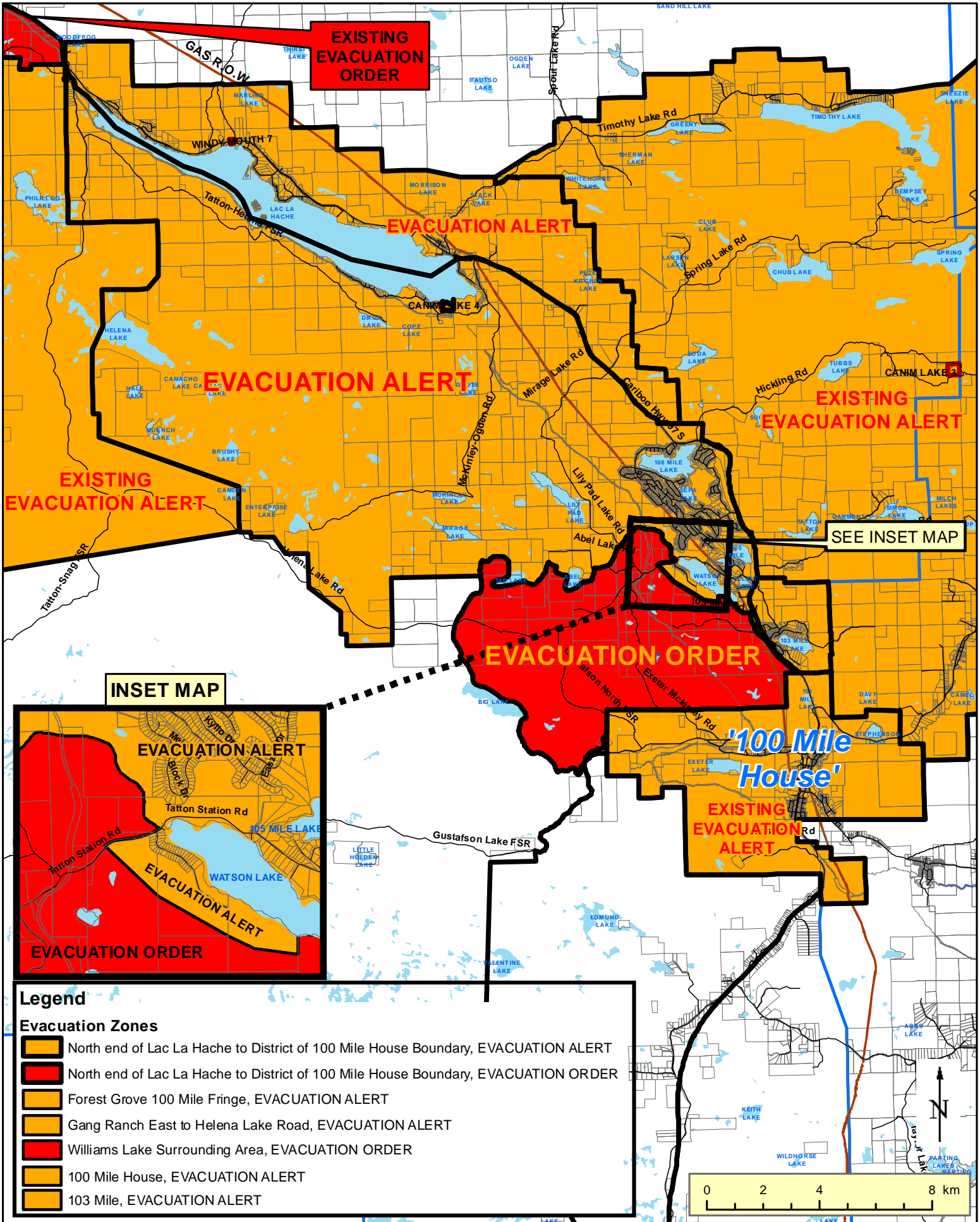
See attached map

YOU MUST NOT ENTER THE ORDER AREA

X 

Al Richmond, CRD Chair

North end of Lac La Hache to District of 100 Mile House Boundary,
Evacuation Order/Alert, July 22, 2017, 2:00 PM



**EXISTING
EVACUATION
ORDER**

EVACUATION ALERT

EVACUATION ALERT

**EXISTING
EVACUATION ALERT**

**EXISTING
EVACUATION ALERT**

SEE INSET MAP

EVACUATION ORDER

**'100 Mile
House'**

**EXISTING
EVACUATION
ALERT**

INSET MAP








EVACUATION ALERT

EVACUATION ALERT

EVACUATION ORDER

Legend

Evacuation Zones

-  North end of Lac La Hache to District of 100 Mile House Boundary, EVACUATION ALERT
-  North end of Lac La Hache to District of 100 Mile House Boundary, EVACUATION ORDER
-  Forest Grove 100 Mile Fringe, EVACUATION ALERT
-  Gang Ranch East to Helena Lake Road, EVACUATION ALERT
-  Williams Lake Surrounding Area, EVACUATION ORDER
-  100 Mile House, EVACUATION ALERT
-  103 Mile, EVACUATION ALERT

