



CRD Evacuation Order Kleena Kleene Area

EVACUATION ORDER ISSUED

Friday, July 28, 2017 at 2:00 pm

Pursuant to the BC Emergency Program Act, an amended Evacuation Order has been issued by the Cariboo Regional District. This order is replacing the Kleena Kleene One Eye Lake Area Order issued on July 10, 2017 at 4:00 pm.

Due to immediate danger to **life safety** due to fire, members of the RCMP or other groups will be enforcing this action.

The Evacuation Order is in effect for the following area:

Please see attached map

WHAT YOU SHOULD DO:

- You must leave the area **immediately**
- Close all windows and doors
- Shut off all gas and electrical appliances, other than refrigerators and freezers
- Close gates (latch) but do not lock
- Gather your family: take a neighbour or someone who needs help
- Take critical items (medicine, purse, wallet, and Keys) only if they are immediately available. Take pets in pet kennels or on leash.
- Do not use more vehicles than you have to.
- Do not use the telephone unless you need emergency service.

YOU MUST LEAVE THE AREA IMMEDIATELY

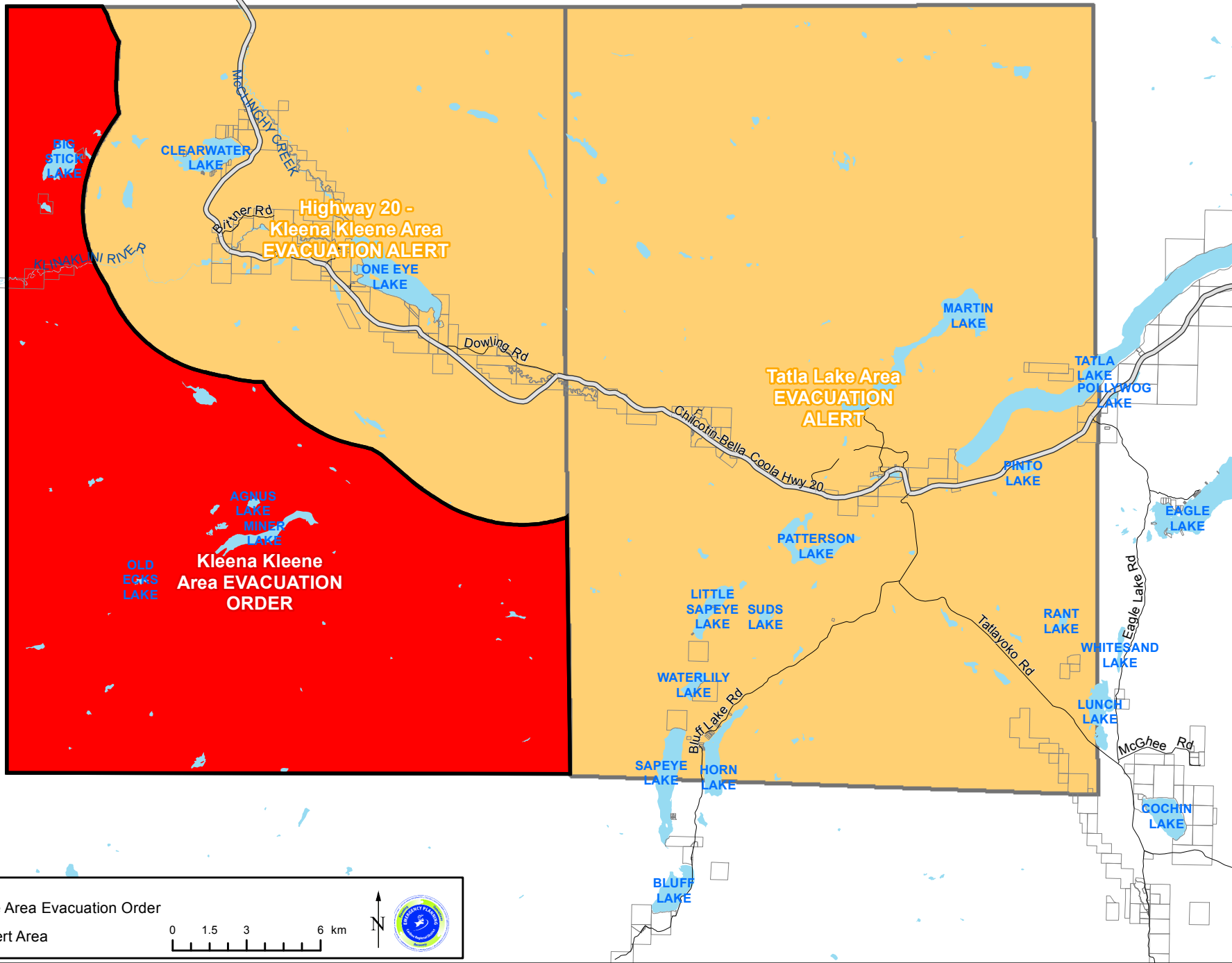
For more information contact: 1-866-759-4977

A handwritten signature in blue ink that reads "Al Richmond".

X _____

Al Richmond, CRD Chair

Kleena Kleene Area Evacuation Order, July 28, 2017, 2:00 pm



Legend:
Red box: Kleena Kleene Area Evacuation Order
Orange box: Evacuation Alert Area

Scale: 0 1.5 3 6 km

North arrow and logo of the Kleena Kleene Area Council.