



CRD Evacuation Order

South of Highway 20 to Gang Ranch and East to Fraser River

REDUCED EVACUATION ORDER ISSUED

Monday September 4, 2017 at 12:45 pm

Pursuant to the BC Emergency Program Act, a reduced Evacuation Order has been issued by the Cariboo Regional District. This order is replacing the South of Highway 20 to Southern CRD Boundary and East to Fraser River.

Due to immediate danger to **life safety** due to fire, members of the RCMP or other groups will be enforcing this action.

The Evacuation Order is in effect for the following area:

See attached map

WHAT YOU SHOULD DO:

- You must leave the area **immediately**
- Close all windows and doors
- Shut off all gas and electrical appliances, other than refrigerators and freezers
- Close gates (latch) but do not lock
- Gather your family: take a neighbour or someone who needs help
- Take critical items (medicine, purse, wallet, and Keys) only if they are immediately available. Take pets in pet kennels or on leash.
- Do not use more vehicles than you have to.
- Do not use the telephone unless you need emergency service.

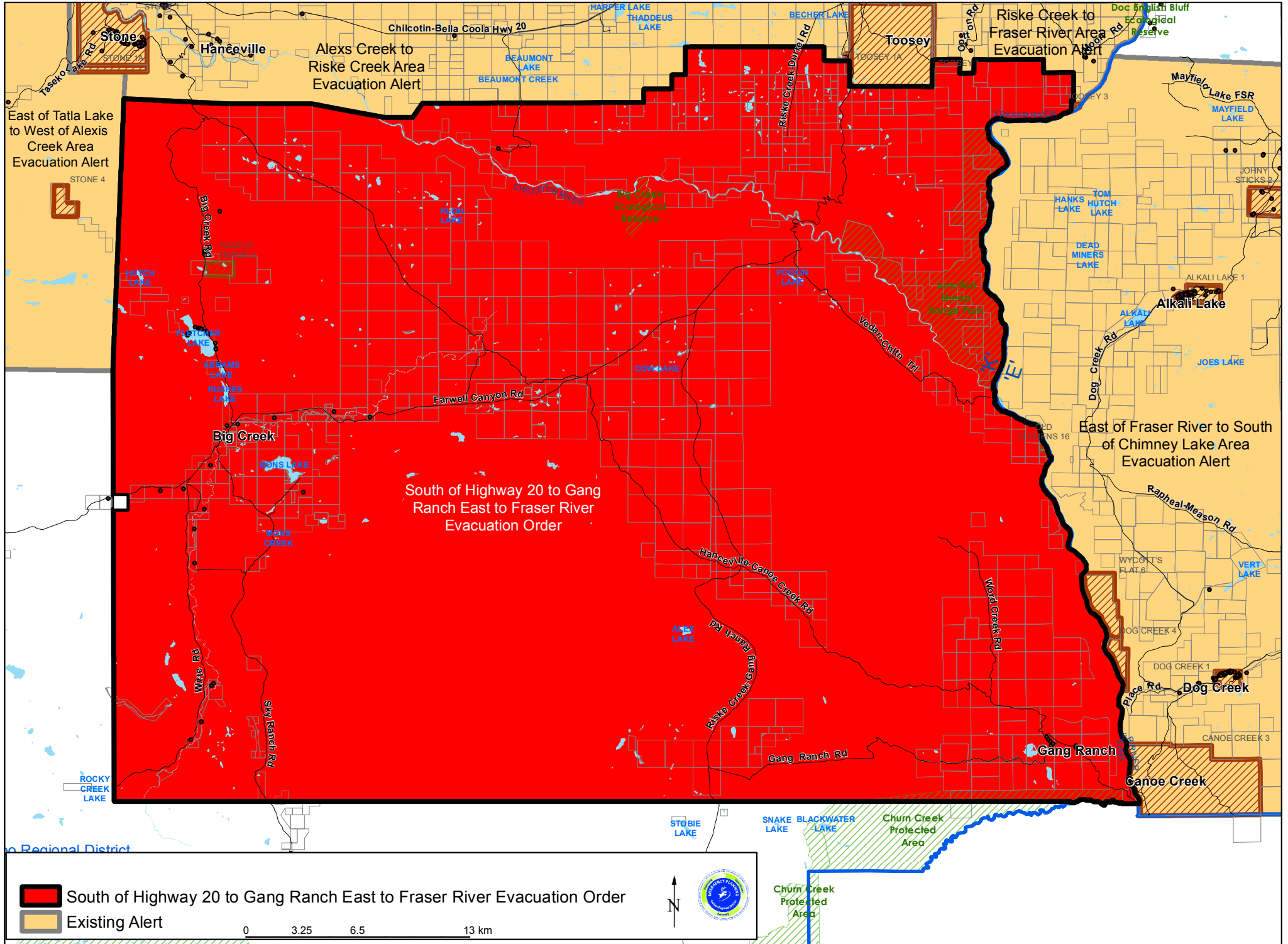
YOU MUST LEAVE THE AREA IMMEDIATELY

For more information contact: 1-866-759-4977

x *Al Richmond*

Al Richmond, CRD Chair

South of Highway 20 to Gang Ranch East to Fraser River Evacuation Order, September 04, 2017



- South of Highway 20 to Gang Ranch East to Fraser River Evacuation Order
- Existing Alert

0 3.25 6.5 13 km



Chum Creek Protected Area