



# CRD Evacuation Alert

## South of Highway 20 to Gang Ranch and East to Fraser River Area

Thursday, September 7, 2017 at 3:30 pm

Pursuant to the BC Emergency Program Act, the order in the South of Highway 20 to Gang Ranch and East to Fraser River Area is being **rescinded and replaced** by the following Alert Area by the Cariboo Regional District at the Emergency Operations Centre (EOC).

### See attached map

In an alert area, you must remain prepared to evacuate your premises or property should it be required. Due to ongoing fire control activities, access to some areas may be limited and is at the discretion of check point personnel.

Residents will be given as much advance notice as possible prior to evacuation; however you may receive limited notice due to changing conditions.

What you should do when an evacuation order has been downgraded to an alert:

Upon notification of an evacuation order downgrade, you should remain prepared for an evacuation by:

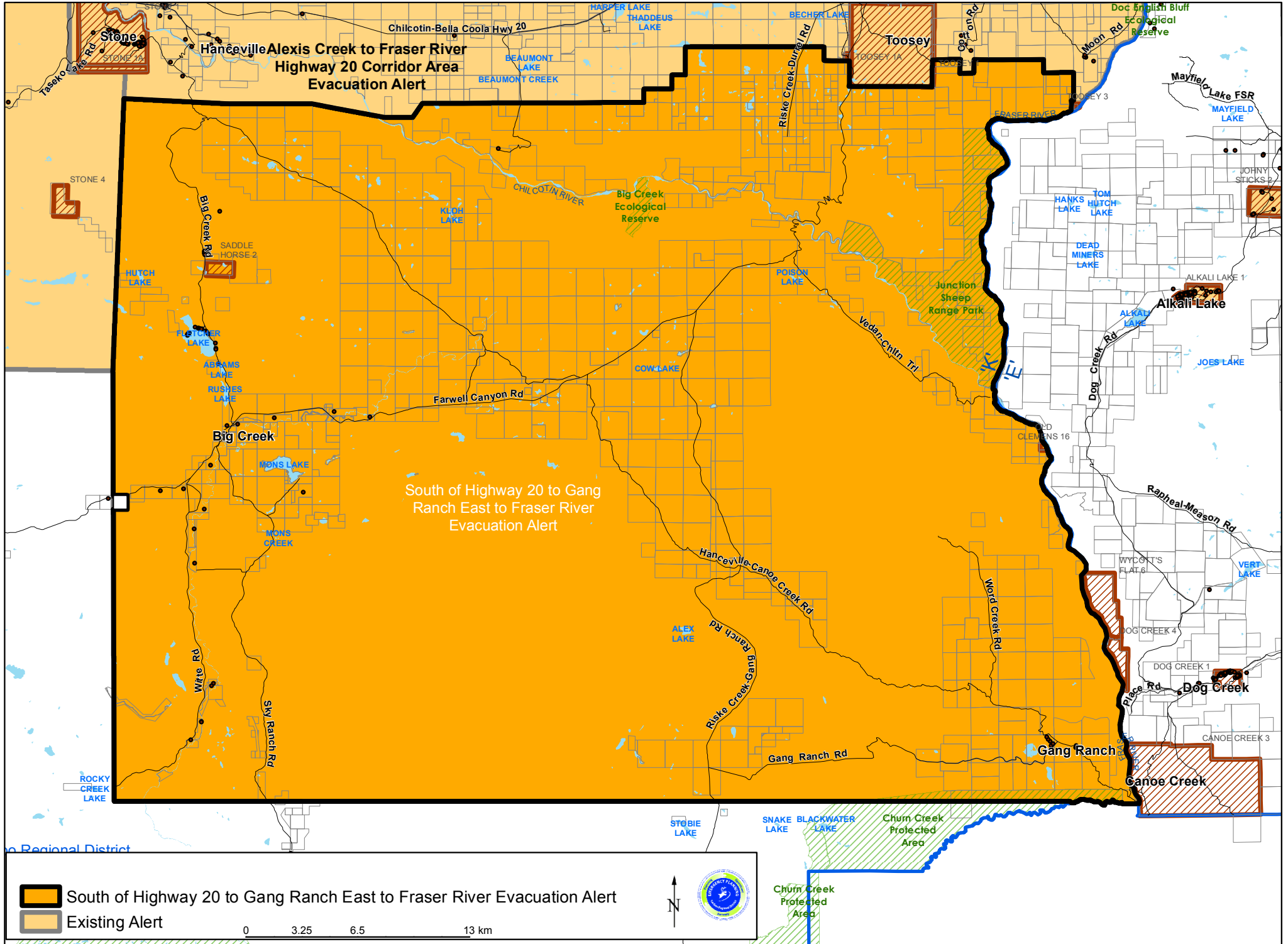
- Having a plan to transport all family members or co-workers outside of the area, should the area be brought back under evacuation order.
- Keeping essential items readily available for a quick departure; including medications, eyeglasses, valuable papers (i.e. insurance), immediate care needs for dependants and, if you choose, keepsakes (photographs, etc).
- Ensuring that any dependants are prepared for departure.
- Ensuring that pets and livestock remain in a safe area.
- Ensuring that you have accommodation options for your family, if possible. Reception Centres will be made available again, if required.
- Monitoring reliable news sources for evacuation order information. Further information will be issued as it becomes available via the CRD Emergency Operations Facebook page (@CRDEmergencyOperations) and the CRD website [www.cariboord.ca](http://www.cariboord.ca)

For more information contact: 1-866-759-4977

X 

Al Richmond, CRD Chair

# South of Highway 20 to Gang Ranch East to Fraser River Evacuation Alert, September 07, 2017



- South of Highway 20 to Gang Ranch East to Fraser River Evacuation Alert
- Existing Alert

0 3.25 6.5 13 km



Chum Creek Protected Area