



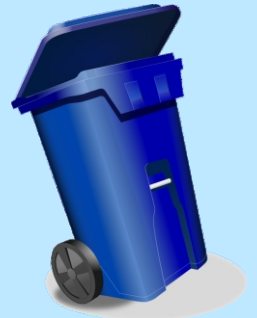
# 2025/2026 Curbside Garbage and Recycling Collection - 108 Mile Ranch



## Curbside Instructions

1. **Have your totes at the curb by 7:30 a.m.** On recycling days, they may need to be left out until 5 p.m.
2. Place your totes so that the lid opens towards the street.

3. Place totes at least one metre apart, or on either side of your driveway, on level ground away from vehicles and other obstacles.
4. Ensure tote lids are closed.
5. Place all items inside the totes.



## Collection Schedule

Garbage is collected every week on Wednesday or Thursday. Recycling is collected every other week on Wednesday or Thursday. See the map and calendar on the back of this flyer for a recycling calendar.

**Please note:** Garbage-only pick up on Thursday, December 25 will be moved to Friday, December 26. Garbage and Recycling pick-up scheduled for Thursday, January 1 will move to Friday, January 2.



## Be Bear Aware

On **Thursday** recycling days from September through November garbage will be collected in the morning and recycling in the afternoon. This will reduce the opportunities for bears to access garbage. For the rest of the year recycling will be picked up first on Thursdays. Wednesday collection will always start with garbage. For additional bear aware tips, go to [wildsafebc.com/black-bear](http://wildsafebc.com/black-bear)

**Totes should be at the curb by 7:30 a.m.**  
**Do not place totes out the night before.**

## Keep Out Contamination



Refer to your **108 Mile Recycling Guide** for what can and cannot be recycled. Download at [cariboord.ca](http://cariboord.ca) or request a copy: 1-800-665-1636.

Keep these common items OUT of your curbside recycling:

- **Plastic Bags** – all, including water softener and wood pellet
- **Glass** – including ceramics
- **Styrofoam** – including foam egg cartons and meat trays
- Plastic toys, rubber balls, Rubbermaid and Tupperware items – **even if they have a recycling symbol**
- Footwear, appliances, electronics, batteries, frying pans, utensils, scrap metal and wood – none of these are accepted items. The South Cariboo Recycling Guide has more information on recycling these materials.

**Random curbside audits will continue this year to keep contamination rates in check.**

**Did You Know?** Milk and milk substitute containers have a 10¢ deposit, return for refund with your other deposit beverage containers.



In 2024, over 96 tonnes of packaging and printed paper recyclables were diverted from the landfill!



# RECYCLING SCHEDULE (Only) - 2025-2026

**May 2025**

Su	M	Tu	W	Th	F	Sa
				1	2	3
4	5	6	7	8	9	10
11	12	13	14	15	16	17
18	19	20	21	22	23	24
25	26	27	28	29	30	31

**June 2025**

Su	M	Tu	W	Th	F	Sa
1	2	3	4	5	6	7
8	9	10	11	12	13	14
15	16	17	18	19	20	21
22	23	24	25	26	27	28
29	30					

**July 2025**

Su	M	Tu	W	Th	F	Sa
		1	2	3	4	5
6	7	8	9	10	11	12
13	14	15	16	17	18	19
20	21	22	23	24	25	26
27	28	29	30	31		

**August 2025**

Su	M	Tu	W	Th	F	Sa
					1	2
3	4	5	6	7	8	9
10	11	12	13	14	15	16
17	18	19	20	21	22	23
24	25	26	27	28	29	30
31						

**September 2025**

Su	M	Tu	W	Th	F	Sa
	1	2	3	4	5	6
7	8	9	10	11	12	13
14	15	16	17	18	19	20
21	22	23	24	25	26	27
28	29	30				

**October 2025**

Su	M	Tu	W	Th	F	Sa
			1	2	3	4
5	6	7	8	9	10	11
12	13	14	15	16	17	18
19	20	21	22	23	24	25
26	27	28	29	30	31	

**November 2025**

Su	M	Tu	W	Th	F	Sa
						1
2	3	4	5	6	7	8
9	10	11	12	13	14	15
16	17	18	19	20	21	22
23	24	25	26	27	28	29
30						

**December 2025**

Su	M	Tu	W	Th	F	Sa
	1	2	3	4	5	6
7	8	9	10	11	12	13
14	15	16	17	18	19	20
21	22	23	24	25	26	27
28	29	30	31			

**January 2026**

Su	M	Tu	W	Th	F	Sa
			1	2	3	
4	5	6	7	8	9	10
11	12	13	14	15	16	17
18	19	20	21	22	23	24
25	26	27	28	29	30	31

**February 2026**

Su	M	Tu	W	Th	F	Sa
1	2	3	4	5	6	7
8	9	10	11	12	13	14
15	16	17	18	19	20	21
22	23	24	25	26	27	28

**March 2026**

Su	M	Tu	W	Th	F	Sa
1	2	3	4	5	6	7
8	9	10	11	12	13	14
15	16	17	18	19	20	21
22	23	24	25	26	27	28
29	30	31				

**April 2026**

Su	M	Tu	W	Th	F	Sa
			1	2	3	4
5	6	7	8	9	10	11
12	13	14	15	16	17	18
19	20	21	22	23	24	25
26	27	28	29	30		

