



2026 - 2027 Curbside Garbage and Recycling Collection - 108 Mile Ranch

Visit Our Website



www.cariboord.ca/108curbside/

Curbside Instructions

1. Have your totes at the curb by 7:30 a.m. the day of pick-up. On recycling days they may need to be left out until 5 p.m.
2. Place your totes so that lids open towards the street.
3. Place totes at least one metre apart, or on either side of your driveway, on level ground away from vehicles and other obstacles.
4. Ensure tote lids are closed.
5. Place all items inside totes.



Collection Schedule

Garbage is collected every week on Wednesday or Thursday. Recycling is collected every other week on Wednesday or Thursday. See reverse for collection day map and recycling schedule.

Please Note: Collection services on Wednesday, July 1st, September 30th and November 11th will not change. Pick-up will occur as usual on these statutory holidays.

Keep Out Contamination




Refer to your 108 Mile Recycling Guide for what can and cannot be recycled. Download at cariboord.ca or request a copy: 1-800-665-1636.

Keep these common items **OUT** of your curbside recycling:

- **No Plastic Bags** – all, including water softener and wood pellet
- **No Glass** – including ceramics
- **No Styrofoam** – including foam egg cartons and meat trays
- Plastic toys, rubber balls, Rubbermaid and Tupperware items – **even if they have a recycling symbol**
- **No** Footwear, appliances, electronics, batteries, frying pans, utensils, scrap metal and wood – none of these are accepted items.

Random curbside audits will continue this year to keep contamination rates in check. 

Not Everything is Accepted

Recyclables and hazardous materials such as batteries (all kinds), electronics, chemicals, medications, paint, propane canisters/tanks, automotive oil, and fuels are not permitted in garbage or recycling totes. 

Visit rcbc.ca or call 1-800-667-4321 to find out where to recycle these items.



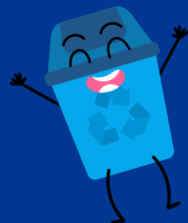
Be Bear Aware

Place totes at the curb the morning of your collection day, not the night before. Garbage will always be picked up first on both Wednesday and Thursdays, year round. For additional bear aware tips, go to wildsafe.com/black-bear

Totes should be at the curb by 7:30 a.m. Do not place totes out the night before.

Did you know?

- Items labelled “compostable” belong in the garbage, not the recycling.
- Milk and milk substitute containers have a 10¢ deposit, return for refund with your other deposit beverage containers.



In 2025, the 108 Mile Ranch diverted over 93 tonnes of packaging and printed paper recycling from the landfill!

THANK YOU!



108 MILE CURBSIDE RECYCLING COLLECTION 2026/2027

Garbage collection occurs every Wednesday and Thursday, including statutory holidays.

Wednesday Pick-up Thursday Pick-up

MAY 2026

SUN	MON	TUE	WED	THU	FRI	SAT
					1	2
3	4	5	6	7	8	9
10	11	12	13	14	15	16
17	18	19	20	21	22	23
24	25	26	27	28	29	30
31						

JUNE 2026

SUN	MON	TUE	WED	THU	FRI	SAT
	1	2	3	4	5	6
7	8	9	10	11	12	13
14	15	16	17	18	19	20
21	22	23	24	25	26	27
28	29	30				

JULY 2026

SUN	MON	TUE	WED	THU	FRI	SAT
			1	2	3	4
5	6	7	8	9	10	11
12	13	14	15	16	17	18
19	20	21	22	23	24	25
26	27	28	29	30	31	

AUGUST 2026

SUN	MON	TUE	WED	THU	FRI	SAT
						1
2	3	4	5	6	7	8
9	10	11	12	13	14	15
16	17	18	19	20	21	22
23	24	25	26	27	28	29
30	31					

SEPTEMBER 2026

SUN	MON	TUE	WED	THU	FRI	SAT
		1	2	3	4	5
6	7	8	9	10	11	12
13	14	15	16	17	18	19
20	21	22	23	24	25	26
27	28	29	30			

OCTOBER 2026

SUN	MON	TUE	WED	THU	FRI	SAT
				1	2	3
4	5	6	7	8	9	10
11	12	13	14	15	16	17
18	19	20	21	22	23	24
25	26	27	28	29	30	31

NOVEMBER 2026

SUN	MON	TUE	WED	THU	FRI	SAT
1	2	3	4	5	6	7
8	9	10	11	12	13	14
15	16	17	18	19	20	21
22	23	24	25	26	27	28
29	30					

DECEMBER 2026

SUN	MON	TUE	WED	THU	FRI	SAT
		1	2	3	4	5
6	7	8	9	10	11	12
13	14	15	16	17	18	19
20	21	22	23	24	25	26
27	28	29	30	31		

JANUARY 2027

SUN	MON	TUE	WED	THU	FRI	SAT
					1	2
3	4	5	6	7	8	9
10	11	12	13	14	15	16
17	18	19	20	21	22	23
24	25	26	27	28	29	30
31						

FEBRUARY 2027

SUN	MON	TUE	WED	THU	FRI	SAT
	1	2	3	4	5	6
7	8	9	10	11	12	13
14	15	16	17	18	19	20
21	22	23	24	25	26	27
28						

MARCH 2027

SUN	MON	TUE	WED	THU	FRI	SAT
	1	2	3	4	5	6
7	8	9	10	11	12	13
14	15	16	17	18	19	20
21	22	23	24	25	26	27
28	29	30	31			

APRIL 2027

SUN	MON	TUE	WED	THU	FRI	SAT
				1	2	3
4	5	6	7	8	9	10
11	12	13	14	15	16	17
18	19	20	21	22	23	24
25	26	27	28	29	30	

